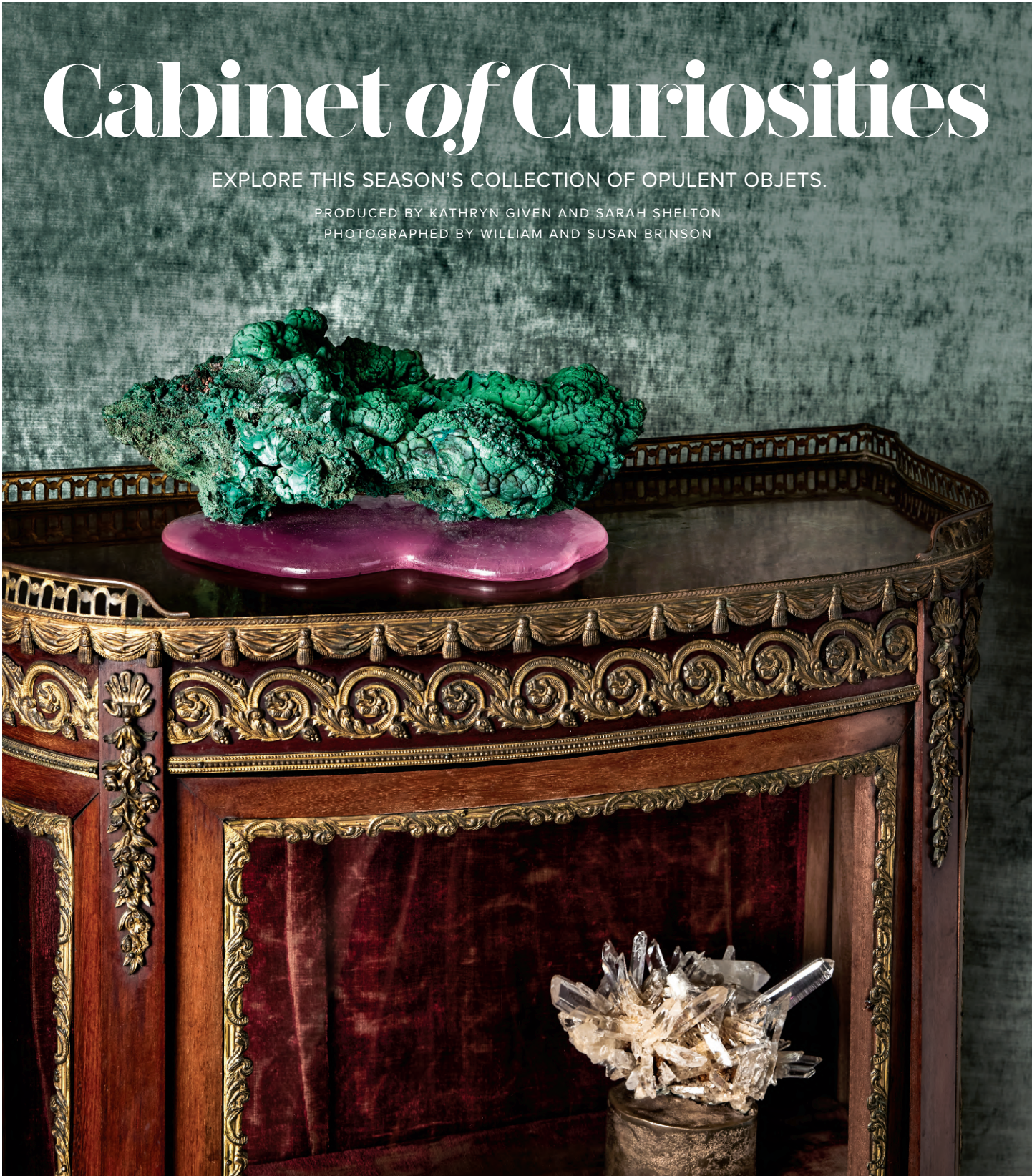


# luxe

INTERIORS+DESIGN®







EARTHLY DELIGHTS

Formed millions of years ago, Studio Greytak’s geological masterpieces artfully juxtapose the elaborate ornamentation of a French curio cabinet from ABC Home. Malachite Botryoidal on Pink Cast Glass Base (top) and Colombian Quartz on Cast Bronze (bottom) are created first by Mother Nature and then composed by Montana’s John Greytak. Each piece is one-of-a-kind and an example of how pressure can produce stunning results. [studiogreytak.com](http://studiogreytak.com); [abchome.com](http://abchome.com)



MARbled MARVELS

Michigan-based maker Erika Stefanutti, founder of Parvum Opus, describes her hand-marbled paper obelisks, architectural models and shadow boxes as “aesthetically pleasing collector’s objects fit for a Wunderkammer.” Inspired by the Grand Tour era when travelers would acquire mementos from far-away places, the objets are a testament to how tangible items act as visual reminders of memorable experiences while also celebrating the spirit of handmade craft. Here, a grouping of marbled finds is displayed in an early-20<sup>th</sup>-century glass-front cabinet from Brooklyn-based City Foundry. [parvumopus.com](http://parvumopus.com); [cityfoundry.com](http://cityfoundry.com)